



Hygienic Equipments Food Industry

hinox[®]
HİJYEN EKİPMANLARI





TU 100 M Mechanic Turning System For Access Control

TU 100 ME Mechanic Turning System For Access Control (Electrical)

Body and arms are produced by 304 quality stainless steel. It is placed to the exit of production. It is mechanical. There are also electrical and card reader models which work with 220 Volt energy power.

Dimensions: Length: 1060 mm Width: 800 mm Height: 955 mm



TU 101 YP Mechanic Turning System For Access Control with Free Passage Turnstile

TU 102 YP Mechanic Turning System For Access Control with Free Passage Turnstile (Electrical)

Body and arms are produced by 304 quality stainless steel. It is placed to the exit of production. It is mechanical. There are also electrical and card reader models, which work with 220 Volt energy power. Turnstile arms are free passage.

Dimensions Mechanic: Length: 150 mm Width 450-1100 mm Height: 950 mm

Dimensions Electrical: Length: 450 mm Width: 450-1100 mm Height: 950 mm



TU 200/D Hand Sanitizer with Access Control
TU 200/DA Hand Sanitizer with Access Control

Body and arms are produced by 304 quality stainless steel. It has a turnstile with dual hand sanitizer which is designed for controlling access and exit to the production area and allows access only to those employees who have completed disinfecting operation successfully. TU 200/D is floor mounted and TU 200/DA is wall mounted types. Electrical panel is isolated and has IP 65. It works with 220 Volt energy power.

Dimensions: Length: 680 mm Width: 800 mm Height: 1250 mm



TU 200/DPB Hand Sanitizer with Access Control and Sole Disinfection Bath

Body, arms and foot bath framework are produced by 304 quality stainless steel. It has a turnstile with dual hand sanitizer and hygienic foot bath for shoes disinfection which is designed for controlling access and exit to the production area and allows access only to those employees who have completed disinfecting operation successfully. Electrical panel is isolated and has IP 65. It works with 220 Volt energy power.

Dimensions: Length: 900 mm Width: 900 mm Height: 1250 mm



YB 300/75 TUD Walk Through System with Hand Sanitizer, Access Control and Sole Disinfection Bath.

Body, arms and foot bath framework are produced by 304 quality stainless steel. It has a turnstile with dual hand sanitizer and hygienic foot bath for shoes disinfection which is designed for controlling access and exit to the production area and allows access only to those employees who have completed disinfecting operation successfully. Turnstile, barrier and foot bath framework are all in one body. It is not necessary to mount the unit because of adjustable feet. Electrical panel is isolated and has IP 65. It works with 220 Volt energy power.

Dimensions: Length: 750 mm Width: 1000 mm Height: 1400 mm



YB 300 TUD/EV Walk Through System with Hand Sanitizer, Access Control, Sole Disinfection Bath and Wash Basin.

Body, arms, washbasin and foot bath framework are produced by 304 quality stainless steel. Washbasin has foot operated or automatic cell tap; soap dispenser, paper towel dispenser and paper bin. Consists a turnstile with dual hand sanitizer, and dual foot bath (if demanded :one foot bath is used as a dripping platform). It has barriers on the sides to control the access. It is used for entering to the food processing area in the plants. It could be used to control the entrance and exit. It has adjustable feet. Electrical panel is isolated and has IP 65. It works with 220 Volt energy power.

Dimensions: Length: 1500 mm Width: 1000 mm Height: 1400 mm



YB 250 TUD/EV Walk Through System with Hand Sanitizer, Access Control, Sole Disinfection Bath and Wash Basin.

Body, arms, washbasin and foot bath framework are produced by 304 quality stainless steel. Washbasin has foot operated or automatic tap, soap dispenser, paper towel dispenser and paper bin. Consists turnstile with dual hand sanitizer, dual foot bath (if demanded :one foot bath is used as a dripping platform). It has barriers on the sides to control the access. It is used for entering to the food processing area in the plants. It could be used to control the entrance and exit. It has adjustable feet. Electrical panel is isolated and has IP 65. It works with 220 Volt energy power.

Dimensions: Length: 2600 mm Width: 1000 mm Height: 1600 mm

*** Please contact us for different combinations of the walking belt. These systems are suitable for personnel entry and exit tracking system.**



YB 150 Walk Through System with Sole Cleaning Brushes
YB 150 TU Walk Through System with Sole Cleaning Brushes and Turning System

Body and arms are produced by 304 quality stainless steel. It has detecting automatic eye and two brushes for sole cleaning. It has automatic flushing system to mix water and disinfectant. It has adjustable feet. Electrical panel is isolated and has IP 65. It works with 380 Volt energy power. Model YB 150 TU has a turnstile which allows one direction pass through.

Dimensions: Length: 1600 mm Width: 1000 mm
Height: 1100 mm



YB 150 TUD Walk Through System with Sole Cleaning Brushes, Dual Hand Sanitizer and Turning System

Body and arms are produced by 304 quality stainless steel. It has turnstile with automatic dual hand sanitizer, detecting automatic eyes and two brushes for sole cleaning. It has automatic flushing system to mix water and disinfectant. The brushes are on the entrance area. It has barriers on the sides to control the access. It is used for entering to the food processing area in the plants. It could be used to control the entrance and exit. It has adjustable feet. Electrical panel is isolated and has IP 65. It works with 380 Volt energy power.

Dimensions: Length: 1600 mm Width: 1000 mm
Height: 1600 mm



YB 160 TUD Walk Through System with Sole Cleaning Brushes , Hand Sanitizer with Access Control

Body and arms are produced by 304 quality stainless steel. It has turnstile with automatic dual hand sanitizer, detecting automatic eyes and two brushes for sole cleaning. It has automatic flushing system to mix water and disinfectant. The brushes are on the exit area. It has barriers on the sides to control the access. It is used for entering to the food processing area in the plants. It could be used to control the entrance and exit. It has adjustable feet. Electrical panel is isolated and has IP 65. It works with 380 Volt energy power.

Dimensions: Length: 1600 mm Width: 1000 mm Height: 1600 mm



YB 100 TUD Walk Through Sytem with Sole Cleaning Brushes and Hand Sanitizer

Body and arms are produced by 304 quality stainless steel. It has turnstile with automatic dual hand sanitizer, two detecting automatic eyes and two brushes for sole cleaning. It has automatic flushing system to mix water and disinfectant. The brushes are on the access area. It has barriers on the sides to control the access. It is used for entering to the food processing area in the plants. It could be used to control the entrance and exit. It has adjustable feet. Electrical panel is isolated and has IP 65. It works with 380 Volt energy power. This unit is recommended for high populated production areas.

Dimensions: Length: 2100 mm Width: 950 mm Height: 1600 mm

*** Please contact us for different combinations of the walking belt. These systems are suitable for personnel entry and exit tracking system.**



TAC 250 Walk Through System with Dual Soles and Boot Cleaning

The whole unit is produced by 304 quality stainless steel. It has detecting automatic eye, two brushes for sole cleaning and three brushes for boot cleaning. It has automatic flushing system to mix water and disinfectant. It has barriers on the sides to control the access. It has adjustable feet. Electrical panel is isolated and has IP 65. It works with 380 Volt energy power.

Dimensions: Length: 1600 mm Width: 1000 mm Height: 1100 mm



TAC 250 TUD Walk Through System with Soles/Boot Cleaning and Hand Sanitizer

Body and arms are produced by 304 quality stainless steel. It has turnstile with automatic dual hand sanitizer, detecting automatic eye, two brushes for sole cleaning and three brushes for boot cleaning. It has automatic flushing system to mix water and disinfectant. The brushes are on the sides to control the access. It is used for entering to the food processing area in the plants. It could be used to control the entrance and exit. It has adjustable feet. Electrical panel is isolated and has IP 65. It works with 380 Volt energy power.

Dimensions: Length: 2100 mm Width: 1000 mm Height: 1600 mm



TAC 200 Walk Through System with Dual Soles/Boot Cleaning

The whole unit is produced by 304 quality stainless steel. It has detecting automatic eye, two brushes for sole cleaning and three brushes for boot cleaning. It has automatic flushing system to mix water and disinfectant. It has barriers on the sides to control the access. It has adjustable feet. Electrical panel is isolated and has IP 65. It works with 380 Volt energy power. This unit is recommended for high populated production areas.

Dimensions: Length: 1800 mm Width: 1200 mm Height: 1250 mm



TAC 200 TUD Walk Through System with Soles/Boot Cleaning, Hand Sanitizer

Body and arms are produced by 304 quality stainless steel. It has turnstile with automatic dual hand sanitizer, detecting automatic eye, two brushes for sole cleaning and three brushes for boot cleaning. It has automatic flushing system to mix water and disinfectant. The brushes are on the access area. It has barriers on the sides to control the access. It is used for entering to the food processing area in the plants. It could be used to control the entrance and exit. It has adjustable feet. Electrical panel is isolated and has IP 65. It works with 380 Volt energy power. This unit is recommended for high populated production areas.

Dimensions: Length: 2400 mm Width: 1200 mm Height: 1600 mm

*** Please contact us for different combinations of the walking belt. These systems are suitable for personnel entry and exit tracking system.**



YB 150 TUD EV Walk Through System with Turning System, Sole Washer Brushes, Hand Sanitizer and Washbasin

The whole unit is produced by 304 quality stainless steel. Washbasin has foot operated or automatic cell tap, soap dispenser, paper towel dispenser and paper bin. Consists turnstile with automatic dual hand sanitizer, two brushes for sole cleaning. It has automatic flushing system to mix water and disinfectant. The brushes are on the entrance area. It has barriers on the sides to control the access. It is used for entering to the food processing area by washing the hands. It could be used to control the entrance and exit. It has adjustable feet. Electrical panel is isolated and has IP 65. It works with 380 Volt energy power.

Dimensions: Length: 2600 mm Width: 1000 mm Height: 1600 mm



YB 160 TUD EV Walk Through System with Turning System, Sole Washer Brushes, Hand Sanitizer and Washbasin

The whole unit is produced by 304 quality stainless steel. Washbasin has foot operated or automatic cell tap, soap dispenser, paper towel dispenser and paper bin. Consists turnstile with automatic dual hand sanitizer, two brushes for sole cleaning. It has automatic flushing system to mix water and disinfectant. The brushes are on the exit area. It has barriers on the sides to control the access. It is used for entering to the food processing area by washing the hands. It could be used to control the entrance and exit. It has adjustable feet. Electrical panel is isolated and has IP 65. It works with 380 Volt energy power.

Dimensions: Length: 2100 mm Width: 1000 mm Height: 1600 mm



TAC 250 TUD EV Walk Through System with Turning System, Soles/Boot Cleaning, Hand Sanitizer, Wash Basin

The whole unit is produced by 304 quality stainless steel. Washbasin has foot operated or automatic cell tap, soap dispenser, paper towel dispenser and paper bin. Consists turnstile with automatic dual hand sanitizer, two brushes for sole cleaning and three brushes for boot cleaning. It has automatic flushing system to mix water and disinfectant. The brushes are on the entrance area. It has barriers on the sides to control the access. It is used for entering to the food processing area by washing the hands. It could be used to control the entrance and exit. It has adjustable feet. Electrical panel is isolated and has IP 65. It works with 380 Volt energy power.

Dimensions: Length: 2600 mm Width: 1000 mm Height: 1600 mm



TAC 250 TUD EV-YG Walk Through System with Turning System, Soles/Boot Cleaning, Hand Sanitizer, Wash Basin

The whole unit is produced by 304 quality stainless steel. Washbasin has foot operated or automatic cell tap, soap dispenser, paper towel dispenser and paper bin. Consists turnstile with automatic dual hand sanitizer, two brushes for sole cleaning and three brushes for boot cleaning. It has automatic flushing system to mix water and disinfectant. The brushes are on the entrance area. It has barriers on the sides to control the access. It has dual entrance and suitable for personnel with slippers. It is used for entering to the food processing area by washing the hands. It could be used to control the entrance and exit. It has adjustable feet. Electrical panel is isolated and has IP 65. It works with 380 Volt energy power.

Dimensions: Length: 2600 mm Width: 1300 mm Height: 1600 mm

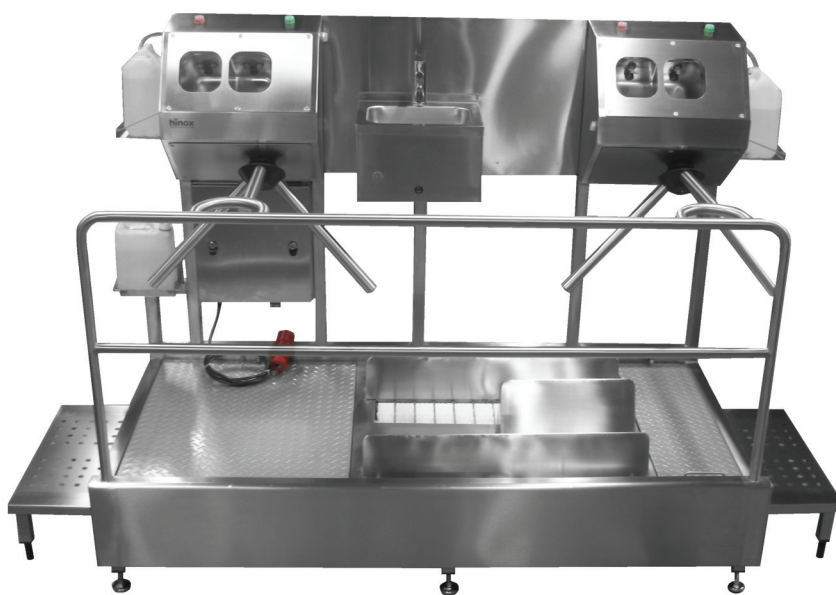
*** Please contact us for different combinations of the walking belt. These systems are suitable for personnel entry and exit tracking system.**



YB 150 TUD S 1000 Walk Through System with Turnstile, Disinfectant, Sole Cleaning Brushes, Washbasin Dual Automatic Hand Soap Dispenser

The whole unit is produced by 304 quality stainless steel. Washbasin has foot operated or automatic cell tap, dual automatic soap dispenser, hand dryer machine or (paper towel dispenser- paper bin). Consists turnstile with automatic dual hand sanitizer, two brushes for sole cleaning. It has automatic flushing system to mix water and disinfectant. It has barriers on the sides to control the access. It is used for entering to the food processing area with washed hands and controlled personnel. Also it could be used to control the entrance and exit. It has adjustable feet. Electrical panel is isolated and has IP 65. It works with 380 Volt energy power.

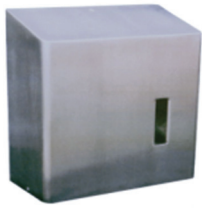
Dimensions: Length: 2100 mm Width: 1000 mm Height: 1600 mm



YB 150 TUS-TUD Walk Through System with Turnstile, Soap Dispenser, Disinfectant, Sole Cleaning Brushes and Washbasin

The whole unit is produced by 304 quality stainless steel. It has turnstile with dual soap dispenser, washbasin with foot operated or automatic cell tap, hand dryer machine or (paper towel dispenser- paper bin), turnstile with automatic dual hand sanitizer, two brushes for sole cleaning. It has automatic flushing system to mix water and disinfectant. It has barriers on the sides to control the access. It is used for entering to the food processing area with washed hands and controlled personnel. Also it could be used to control the entrance and exit. It has adjustable feet. Electrical panel is isolated and has IP 65. It works with 380 Volt energy power.

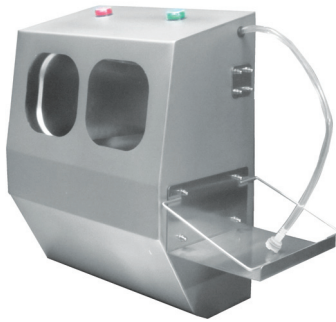
Dimensions: Length: 2600 mm Width: 1000 mm Height: 1600 mm



D 100 Automatic Hand Sanitizer.

The whole unit is made of stainless steel 304 quality. Disinfectant dispenser has one photocelled nozzle and 1 lt disinfectant capacity. It operates with 220 volt energy power.

Dimensions : Depth : 150mm Width : 260 mm Height : 315 mm



D 1000 Dual Hand Automatic Sanitizer.

The whole unit is made of stainless steel 304 quality. It is operated with two hands, green-red warning lights, 5 lt disinfectant capacity. The unit does not work, if both hands are not put in to the dispenser. It operates with 220 volt energy power.

Dimensions: Depth: 265 mm Width: 400 mm Height: 500 mm



A 106 Foot Operated Soap and Disinfectant Dispenser

Its body is made of ABS plastic. It has foot operated pump, 1 lt disinfectant dispenser.

Dimensions: Depth: 100 mm Width: 100 mm Height: 300 mm

ELS 25 Lever operated Soap and Disinfectant Dispenser

Its body is made of aluminium . It is lever operated. Its inner soap pump, lever stick and operating parts are made of 304 quality stainless steel. It has 0.5 lt dispenser.

Dimensions: Depth: 100 mm Width: 100 mm Height: 300 mm

WSD 410 Automatic Soap and Disinfectant Dispenser

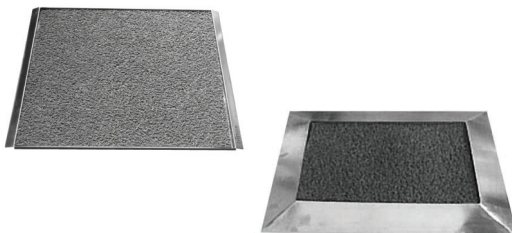
It is produced 304 quality stainless steel, it is automatic soap and disinfectant dispenser. It has 0.80 lt dispenser. It works with alkaline battery or electricity.

Dimensions: Depth: 100 mm Width: 115 mm Height: 215 mm

WSD 407 WSD 410 Automatic Soap and Disinfectant Dispenser

It is produced 304 quality stainless steel, it is automatic soap and disinfectant dispenser. It has 1 lt dispenser. It works with alkaline battery or electricity. There are also ABS plastic body models.

Dimensions: Depth: 100 mm Width: 115 mm Height: 230 mm



HIP 9570 Hygienic Mat

HIP 9545 Hygienic Mat

The frame is produced by 304 quality stainless steel. There is spagethi hygiene mat in the frame. There are recessed mounted and surface mounted models. It can be produced as demanded measures.

Dimensions: HIP 9570 950x700m HIP 9545 950x450mm



GAL 50 AK Shoe Cover, Head Cover Dispenser with Bin

It is produced by 304 quality stainless steel. It is wall mounted. Dispenser and bin could be used separately.

Dimensions: Depth: 250 mm Width: 500 mm Height: 800 mm



YAO 50 BAS Wall Mounted Washbasin with Knee Operated Tap

It is produced by 304 quality stainless steel. Its tap is knee operated. It has one inlet for cold or hot water. It is wall mounted.

Dimensions: Depth: 430 mm Width: 500 mm Height: 500 mm



YAA 50 P Washbasin with Foot Operated Tap

It is produced by 304 quality stainless steel. Its tap is foot operated. Feet are adjustable.

- YAA 50 P/1 : cold or hot water inlet, one pedal model
- YAA 50 P/2 : cold and hot water inlet, one pedal model
- YAA 50 P/3 : cold and hot water inlet, dual pedal model

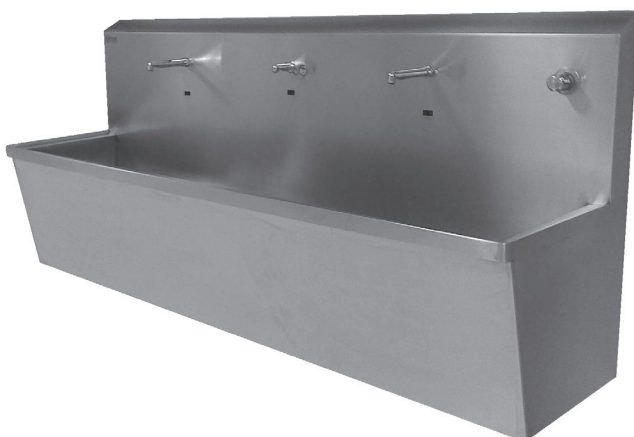
Dimensions: Depth: 430 mm Width: 500 mm Height: 1400 mm



**YAA 60 TCM Washbasin with Automatic Tap
YAA 60 P Washbasin with Foot Operated Tap**

It is produced by 304 quality stainless steel, inner shape is concave. Its tap is angled. It has a user friendly form. Feet are adjustable. It works with 220 V-9 V power transformer. It has also foot operated models in different sizes.

Dimensions: Depth: 570 mm Width: 600 mm Height: 1300 mm



**YAO 120 TCM Washbasin with Automatic Tap
YAO 120 P Washbasin with Foot Operated Tap**

It is produced by 304 quality stainless steel, inner shape is concave. Its tap is angled. It has a user friendly form. Feet are adjustable. It works with 220 V-9 V power transformer. It has also foot operated models in different sizes.

Dimensions: Depth: 570 mm Width: 1200 mm Height: 1400 mm



EVY 3636 Corner Washbasin

It is produced by 304 quality stainless steel, inner shape is concave. The tap is foot operated or automatic. The unit is wall mounted.

Dimensions: Depth: 360mm Width: 360 mm Height: 200 mm



EVY 4030 Mini Washbasin

It is produced by 304 quality stainless steel, inner shape is concave. The tap is foot operated or automatic. The unit is wall mounted.

Dimensions: Depth: 300mm Width: 400 mm Height: 250 mm



Y00 35 RI Washbasin

It is produced by 304 quality stainless steel, inner shape is concave. The tap is foot operated or automatic. The unit is wall mounted.

Dimensions: Depth: 41.5 mm Width: 320 mm Height: 400 mm



SEB 40 Washbasin

It is produced by 304 quality stainless steel, inner shape is concave. The tap is foot operated or automatic. The unit is self standing.

Dimensions: Depth: 46,5 mm Width: 400 mm Height: 1000 mm



PAS 60 Washbasin For Janitorial Rooms

It is produced by 304 quality stainless steel. This washbasin has manual operated tap and used in janitorial rooms.

STERILIZATION UNITS



BSU 120
Multiple Knife
Sterilizing Unit
by UV lamp



BSS 110
Knife
Sterilizing
Unit



BSU 110
Multiple Knife
Sterilizing Unit
by UV lamp

ELECTRONIC INSECT KILLERS



SIT 220

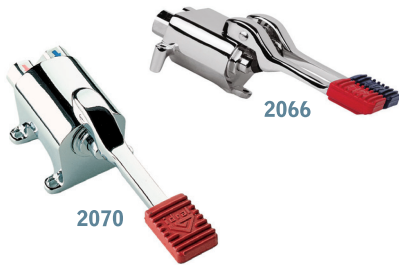
SIT 240



FOOT OPERATED TAPS



2061



2066

2070

ELECTRONIC TAPS



M 225T



E 225T



UFO MET

PRE-DISHWASHING SHOWER WITH TAP



9410



9420

WASTE RECEPTACLES



PAPER TOWEL DISPENSERS



A 180A



A 174E



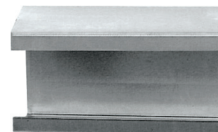
A 180



MAV100
MASK DISPENSER



ONV102
OVERALL DISPENSER



ELV100
GLOVE DISPENSER

FLOOR DRAINS

100x100; 150x150; 200x200;
250x250; 300x300
(Ø:30, 50, 70, 100 out let)



MIRRORS

STAINLES STEEL FRAME MIRROR AND
FRAMELESS MIRROR
STAINLES STEEL MIRROR



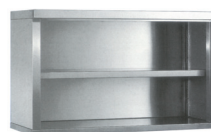
A 705



A 700

Stainles Steel

SHELVES, CABINETS, SHELVES



CABINETS DRESSING ROOMS



EMERGENCY EYES/BODY BATH SYSTEMS



PANEL FOR DRYING BOOTS



CIT 120 H



CIT 115

DIFFERENT TYPES OF HYGIENIC STATION UNITS/COMBINATIONS

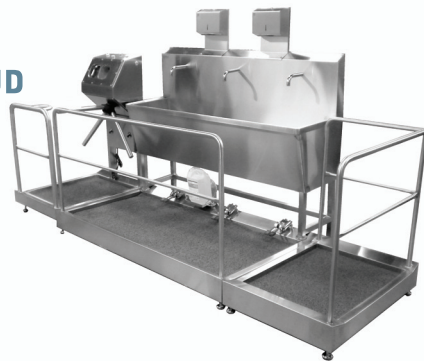
**TAC 250 TUD
EV D 1000**



TAC 300 TUD



**YAA 180 HIP
YB 300 / 75 TUD**



YB 300/75 TUS / YB 300 TUD EV



**YB 300/75 TUS
YAA 60 TCM
YB 150 TUD**



TAC 250 TUD EV / TAC 250 TU



CASE CLEANING UNITS



**CONTAINER
CLEANING
UNITS**



INTERPLAST PLASTİK VE METAL MAMÜLLERİ İMALAT SANAYİ VE TİCARET ANONİM ŞİRKETİ

INTERPLAST was established in 1983 which has very competent employees in its own sector. It is one of the leading company among the washroom equipment manufacturers. It had ISO 9001 quality certification in 2008. Except İstanbul -İzmir showrooms and sales offices, Interplast is working more than 250 distributors all over Turkey, it is also exporting its own productions to many different countries. Since 2002, Interplast produces tailor-made stainless steel equipments besides the standart production. Our mission is to serve the best qualified products and the best service after sale to our customers. With in this framework, Interplast presents with the "Project" and Technical Counseling concept. Known with Stelfi and Hinox brands, "Interplast" gained the confidence of its customers with valuable experiences in the market

"WHY CUSTOMERS PREFER TO WORK WITH INTERPLAST ?"

The products are very durable. They are produced by 304 quality stainless steel. Maintenance is very easy and comfortable. Equipments provide hygiene and cleaning.

Equipments save water, disinfectant and energy. The products have motor and reducers with CE and TSE certifications.

Electrical control units are in the waterproof keyed stainless steel panels.

Siemens, Eaton (Moeller), Schneider (Telemecanique) are preferred brands for electrical components.

There is no need for extra installation, it is enough to make the electrical and water connections.

The brushes on the hygiene machine are very high quality; the size and the hardness of the brushes is very effective.

The brushes don't make the surrounding dirty and wet.

The panelling under basin shouldn't be long to the floor to provide easy cleaning and disinfecting.

ATTENTION :

Electrical and water connection should be done as shown on the machine and the electrical ground should be done.

The technical and maintenance manuals should be read.

If there is need to change the present situation of the machine necessarily "CONTACT" with Technical Service.

The functions of the machines and flushing doses of the disinfectant are adjusted according to the universal norms.

The revisions on the machines can cause to different appereances.



Basım Tarihi: 04.05.2016

AGENT



İSTANBUL : Oto Sanayi, Aytekin Sk. No.6
4.Levent-İstanbul-TÜRKİYE
Tel. +90.212.324 36 49 (pbx)
Fax +90.212.325 64 71

İZMİR : Halkapınar Mah. 1203/1 Sok.
No: 79 Yenişehir-TÜRKİYE
Tel. +90.232.449 80 34
+90.232.449 01 83
Fax +90.232.449 73 27

www.interplast.info.tr
hinoks@gmail.com



Türkiye distribütörü Interplast A.Ş.

